

MAP AND GUIDE

WELCOME!

The Huntington Library, Art Museum, and Botanical Gardens is a collections-based research and educational institution founded in 1919 by Henry E. and Arabella Huntington. Henry Huntington was an exceptional businessman who built a financial empire in Southern California. He was also a man of vision—with a special



interest in rare books, art, and gardens. During his lifetime, he amassed the core of one of the finest research libraries in the world, assembled a spectacular art collection, and established an array of botanical gardens with plants from a geographic range spanning the globe.

The Huntington's collections have continued to grow since Henry Huntington's time, serving up a feast for the senses and intellect, linked by a devotion to research, education, and beauty. Enjoy your visit!

HENRY E. AND ARABELLA HUNTINGTON

Henry Edwards Huntington was born in 1850 in Oneonta, New York. In 1872, he went to work for his uncle, Collis P. Huntington, one of the owners of the Central Pacific Railroad. This work led him west to California. In 1903, he purchased the San Marino Ranch and began transforming it into what is now The Huntington Library, Art Museum, and Botanical Gardens.

In 1913, Huntington married Arabella Duval Huntington, the widow of Collis. She was Henry's age and shared his interests in collecting. As one of the most important art collectors of her generation, she was highly influential in the development of the Huntington's European art collection.

Henry E. Huntington died in 1927; Arabella predeceased him by three years. Both are buried in the mausoleum on the property.



GENERAL INFORMATION

HOURS: Wednesday through Monday, 10 a.m. to 5 p.m. Closed Tuesdays.

THE HUNTINGTON STORE: The Store carries a superb variety of gifts, books, jewelry, toys, and other items related to The Huntington's collections. Shop on-site or online at thehuntingtonstore.org.

DINING: The Huntington offers a range of dining options. Visit huntington.org/dining for menu options and availability.

PHOTOGRAPHY: Flash photography and tripods are not permitted in the buildings. Wedding and portrait photography by appointment only; email portraitphoto@huntington.org.

PETS: Only service animals are permitted.

PICNICS: Not permitted on the grounds.

WHEELCHAIRS: A limited number of nonmotorized wheelchairs are available for loan. We urge you to reserve one in advance of your visit by calling 626-405-2125, Monday through Friday from 8:30 a.m. to 5 p.m. Unreserved wheelchairs may be available on a first-come, first-served basis at the Reception window.

MEMBERSHIP: About a third of The Huntington's annual operating budget depends on the generosity of Members. Benefits to Members include free admission, a Huntington Store discount, invitations to special events, and, at selected levels, admission during nonpublic hours. For more information, call 626-405-2124, or visit huntington.org/membership.

TELEPHONE: 626-405-2100

THE HUNTINGTON  DIGITAL GUIDE

Explore all The Huntington has to offer with our free digital guide, available on the Bloomberg Connects app.

Scan the QR code or search **Bloomberg Connects** on the Apple App or Google Play stores.



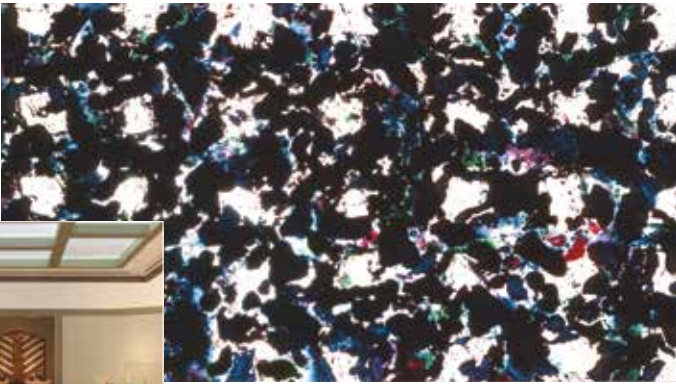
THE HUNTINGTON
Library, Art Museum, and Botanical Gardens

1151 Oxford Road | San Marino, CA 91108 | huntington.org
Cover: Chinese Garden photo by Andrew Mitchell 4/2022



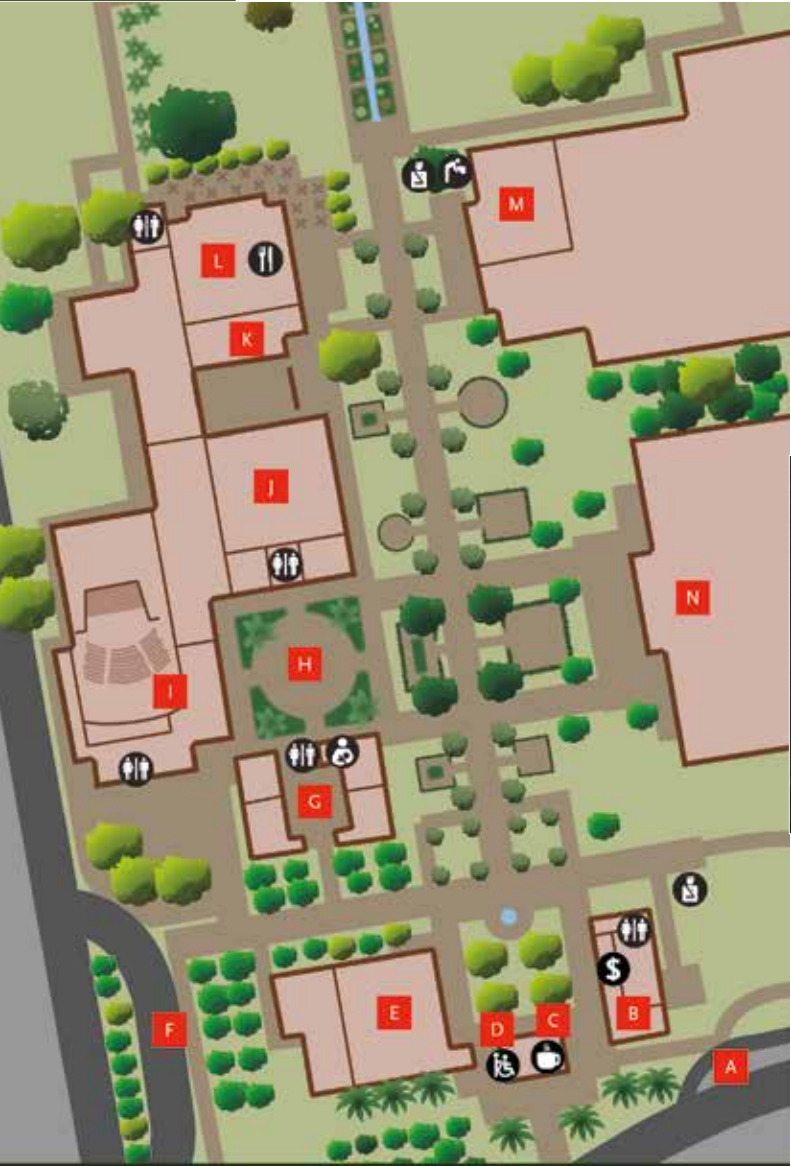
LIBRARY

The Library is one of the world's great independent research libraries concentrated in the fields of British and American history, literature, art, and the history of science, stretching from the 11th century to the present. Highlights from the Library's collection of more than 11 million items are on display in the Library Exhibition Hall. The West Hall of the Library hosts changing exhibitions.



ART MUSEUM

The Art Museum focuses on European art from the 15th through the early 20th century and American art from the late 17th century to the present. European art is displayed in the Huntington Art Gallery, the former residence of Henry E. and Arabella Huntington. American art can be found in the Virginia Steele Scott Galleries of American Art. Major temporary exhibitions are mounted in the MaryLou and George Boone Gallery.



BOTANICAL GARDENS

The Botanical Gardens are an ever-changing exhibition of color and a constant delight. More than a dozen principal gardens cover 130 acres of the 207-acre grounds. Highlights include the Garden of Flowing Fragrance 流芳園, or the Chinese Garden; the Desert Garden; the Japanese Garden; and the Rose Garden.



EDUCATION & VISITOR CENTER

- | | |
|------------------------------------|---------------------------------------|
| A Pedestrian Pickup/Dropoff | H Rose Hills Fdn. Garden Court |
| B Admission & Membership | I Rothenberg Hall |
| C Red Car coffee shop | J Haaga Hall |
| D Reception Window | K Smith Board Room |
| E Huntington Store | L 1919 Cafe |
| F Bus Pickup/Dropoff | M Mapel Orientation Gallery |
| G Banta Education Center | N Munger Research Center |

AMENITIES

- | | | |
|----------------------------------------------------------------------------------------------------|-------------------------------------------------------------------------------------------------------|-------------------------------------------------------------------------------------------------------|
|  Restrooms |  Food & Beverages |  Lactation Room |
|  Coffee Shop |  Wheelchair Pickup |  Drinking Fountain |
|  Security Officer |  ATM | |



THE HUNTINGTON

Library, Art Museum, and Botanical Gardens



All pathways not indicated on map

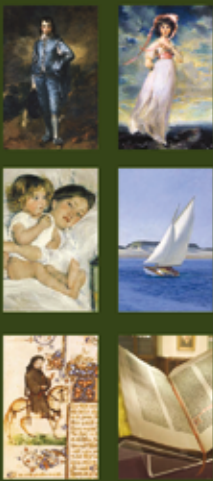
Indicates a nonpublic building

Indicates steep grade or stairs; please use caution

Please check huntington.org for updates, as some areas indicated on the map may not be open.

If you are experiencing an emergency on the property, please call 626-405-2250.

WHERE TO FIND:



- ★ *The Blue Boy*, Thomas Gainsborough; *Pinkie*, Sir Thomas Lawrence
- ★ *Breakfast in Bed*, Mary Cassatt; *The Long Leg*, Edward Hopper
- ★ *The Gutenberg Bible*; Chaucer's *Canterbury Tales*

- | | | |
|-----------------------------------------|------------------------------------------------------|-------------------------------------------------------------------|
| A Admission & Membership | H 1919 Cafe | P Studio for Lodging the Mind |
| B Red Car coffee shop | I Desert Conservatory | Q Jade Court Cafe |
| C Reception Window (wheelchairs) | J Library Exhibition Hall and West Hall | R Boone Gallery |
| D Huntington Store | K Huntington Art Gallery (European) | S Scott Galleries of American Art |
| E Rothenberg Hall | L Rose Garden Tea Room | T Rose Hills Foundation Conservatory for Botanical Science |
| F Munger Research Center | M Japanese House | U Ahmanson Classroom |
| G Mapel Orientation Gallery | N Ceremonial Tea House | V Botanical Administration, Labs, and Flora-Legium |
| | O Freshwater Pavilion (tea, boba, light fare) | |

AMENITIES

- | | | | | | | |
|-----------|-------------------|-----------------|-------------------|--------------------|---------------------------------------|------------------|
| Coffee | Wheelchair Pickup | Bicycle Parking | Drinking Fountain | Food and Beverages | Special Assistance Vehicle (SAV) Stop | Security Officer |
| Restrooms | Lactation Room | | | | | |